

## A Snapshot Survey of Emergency Management Programs at Colleges and Universities

Dennis K. Sullivan  
Assistant Director  
Department of Environmental Health and Safety  
Emergency Coordinator  
University of Louisville

## The Problem

- No survey information about University and College Emergency Management (EM) Programs
- No comparison of EM Programs
- No compendium or archive of best practices

## The Solution

- Create a snapshot survey
- Survey Colleges and Universities
- Compile the surveys
- Analyze limited data
- Develop list on information
- Create additional surveys

## Snapshot Survey

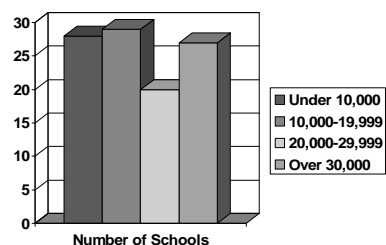
- Size – Student Population
- Emergency Services provided currently – Police, Fire, EMS and Hospital
- FTE Emergency Management/Planning
- Separate EM unit
- Reporting line
- Contact information for future surveys

## Respondents\*

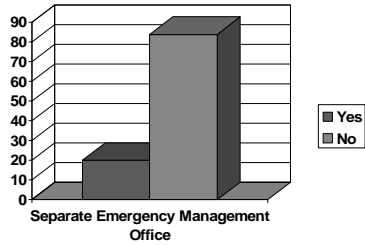
- Participating Schools 104
- Student populations 180 – 70,000
- # of Buildings 6 – 1,200
- EM FTE 0-5.0

\* Respondents as of July 19, 2007 – still accepting data

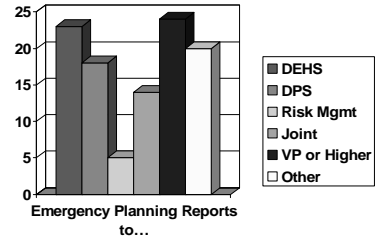
## Emergency Management Respondents Student Population (104 Respondents)



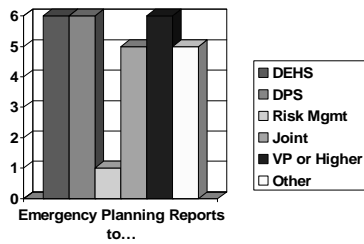
### Universities/Colleges with a Separate Office of Emergency Management



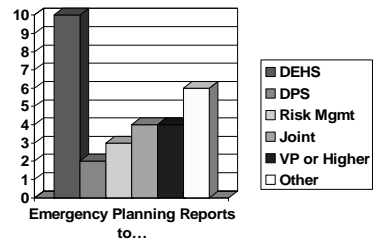
### Where does Emergency Planning/Management Report



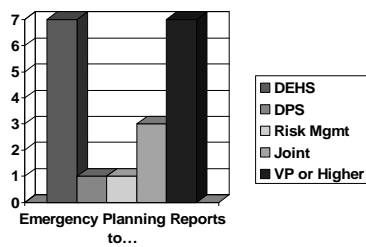
### Schools Under 10,000 Reporting Lines



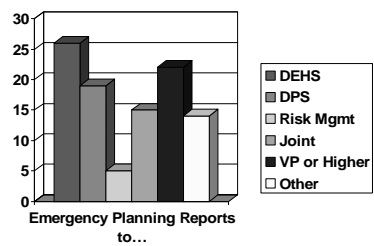
### School 10,000-19,000 Reporting lines



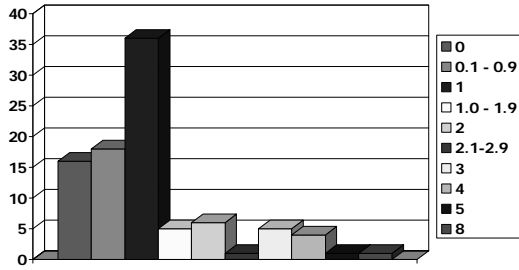
### Schools 20,000-29,999 Reporting Lines



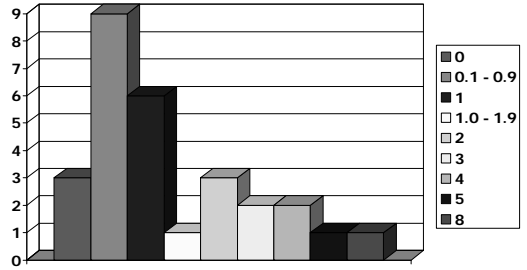
### Schools >30,000 Reporting Lines



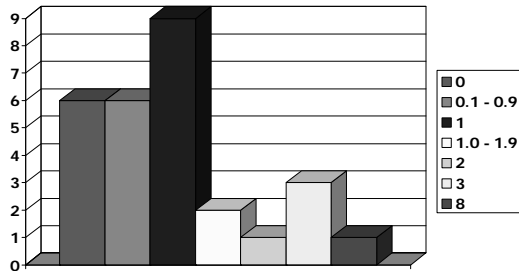
Emergency Management FTE's  
All Respondents



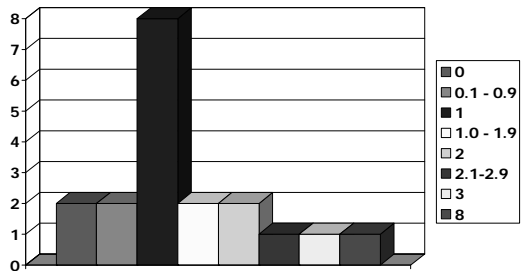
Emergency Management FTE's  
Schools 0 to 9,999



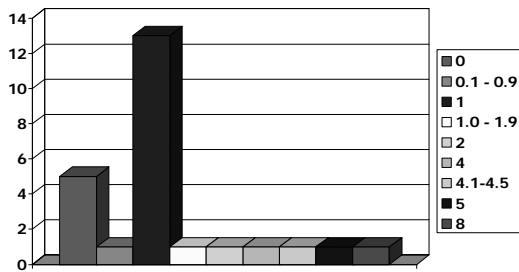
Emergency Management FTE's  
Schools 10,000-19,999



Emergency Management FTE's  
Schools 20,000-30,000



Emergency Management FTE's  
Schools Over 30,000



## Conclusions

- EM resides in DEHS more often
- More school have a single FTE or less managing EM
  - Political correctness?
  - Scapegoat
  - EM is less important and not an investment
- EM sets a schools defining moment during and emergency

## Conclusion

- EM seems to be an “add-on” duty in smaller schools
- Schools that don't have an EM program did not return survey
- More surveys need to be developed to present a better picture and provide the basis for EM evolution!
- The survey and summary are available

## Future of EM

- Events will cause burst of activity – Sustainability?
  - 9/11
  - Katrina
  - VT
  - Earthquakes
- Schools need to accept EM as a core belief
- Schools need to look at EM as an investment
  - Facilities
  - Research
  - Lives
- EMAP

## Schools Recently (or currently) Adding Emergency Management Coordinators

- Washington University in St. Louis
- Rutgers
- Auburn University
- Oregon State University
- Virginia Tech
- Georgetown
- West Virginia
- University of Arizona

## Contact Information

Dennis K. Sullivan  
University of Louisville  
Department of Environmental Health and Safety  
502.852.2948  
dennis.sullivan@louisville.edu